

MetaBright™ Area Backlight

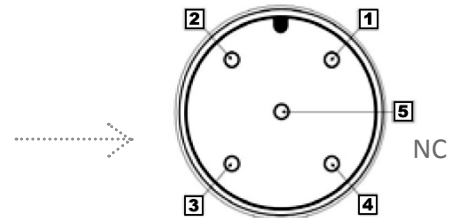
Model#: MB-BL510



- Up to 50 SMD LED's per inch array makes our backlights the brightest most stable backlights in the industry
- Exclusive optical lens producing even (+/- 5%), shadow-free illumination
- High Density Precision Chip technology
- Patent-pending thermal management design draws heat directly from the die ensuring long life
- Stable, flicker-free illumination with instant-start operation

Active Area		Dimensions		Specifications:	
5in x 10in 127mm x 254mm		6.63 in x 13 in x 0.81 in 168.40mm x 330.2mm x 20.57mm		Current Consumption	0.7 ~ 1 Amp @ 24Vdc
				Housing	Aluminum
				Finish	Powder Coated Black
				Intensity Uniformity	+/-5%
				Operating Temperature	120° F Max
				Illuminance	43,000 Lux
				Compliance	CE/RoHS
				Lifetime Hours	75,000 Hours

Wiring Diagram		M12 Connector	
Flying Leads	Function	PIN #	Function
RED	+24VDC	1	+24VDC
BLACK	Ground	3	Ground



ORDERING INFORMATION:

• M B - B L 5 1 0	-	<input type="checkbox"/>	- 2 4 -	<input type="checkbox"/>	
W		White 6000k	*BLANK		10 ft. Flying Leads
R		Red 630nm	T		M12 Quick Disconnect
G		Green 530nm	ILD		In Line Dimmer
B		Blue 455 nm	ILS		In Line Strobe (customer provide trigger info)
IR		Infrared 880nm			
UVL		(long) 395nm			
UVS		(short) 365nm			

MetaBright™ Area Backlight

Model#: MB-BL510

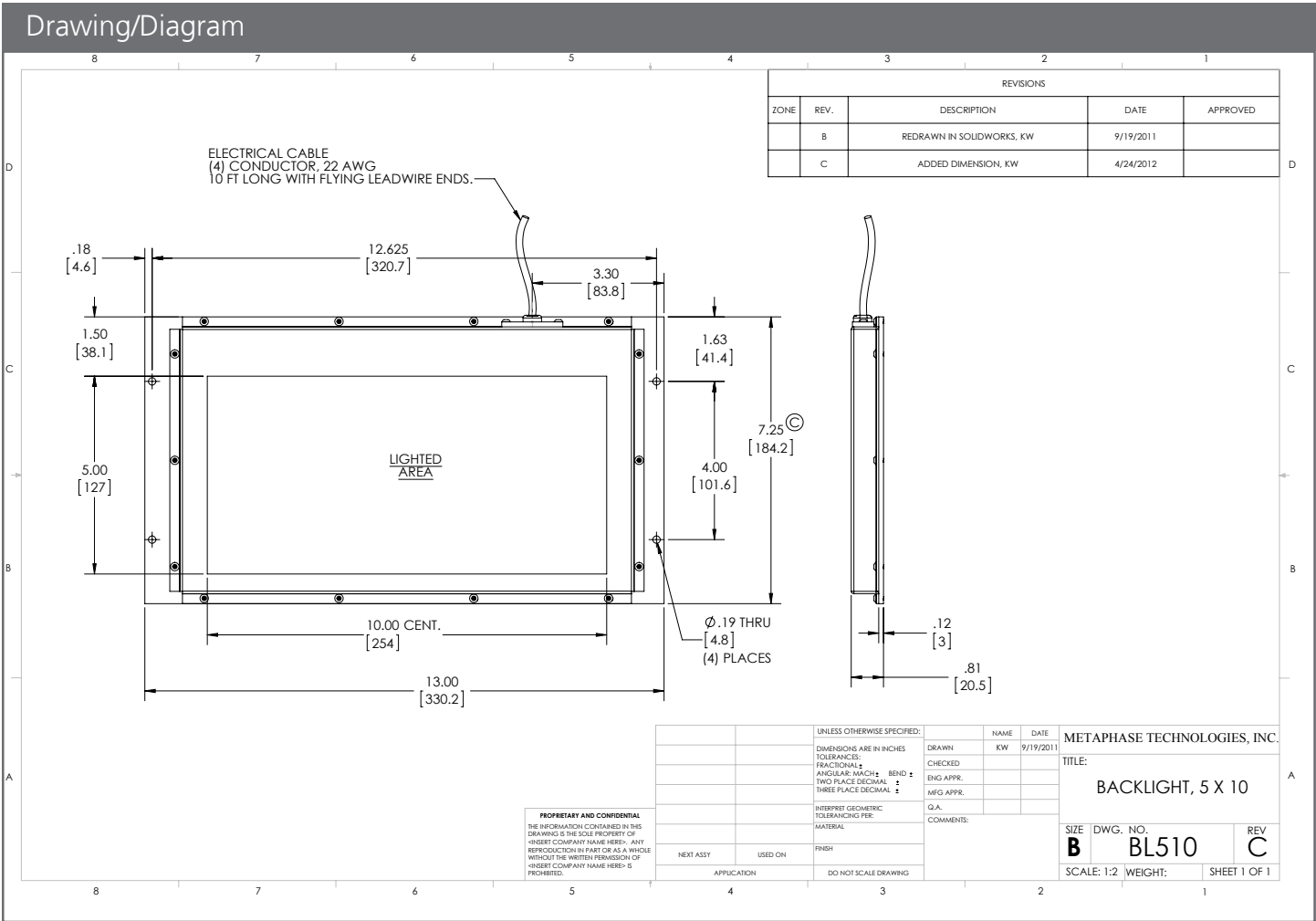


Vision Light Tech
creating optical solutions

	Wavelength (nanometers)
White (°K)	5500-6500°K
Blue	464-485
Green	520-535
Red	620-630
IRN	880
UVL	395
UVS	365

Contact us:

Contact your Metaphase Technologies Representative for options including: Diffuser Choice, Polarizer & Light Control Film, Specific Intensity & Uniformity, & Wavelength.



Vision Light Tech B.V.

Protonenlaan 22, 5405 NE UDEN, P.O. Box 345, 5400 AH UDEN, The Netherlands

Phone: +31 (0)413 26 00 67, Fax +31 (0)413 26 09 38, E-mail: inquiry@vlt.nl, Website: www.vlt.nl

Trade register No. 17150044, VAT No. NL8112.30.946.B01