

Ring Lights

SQR series

Refer to our website for product details.

CCS SQR

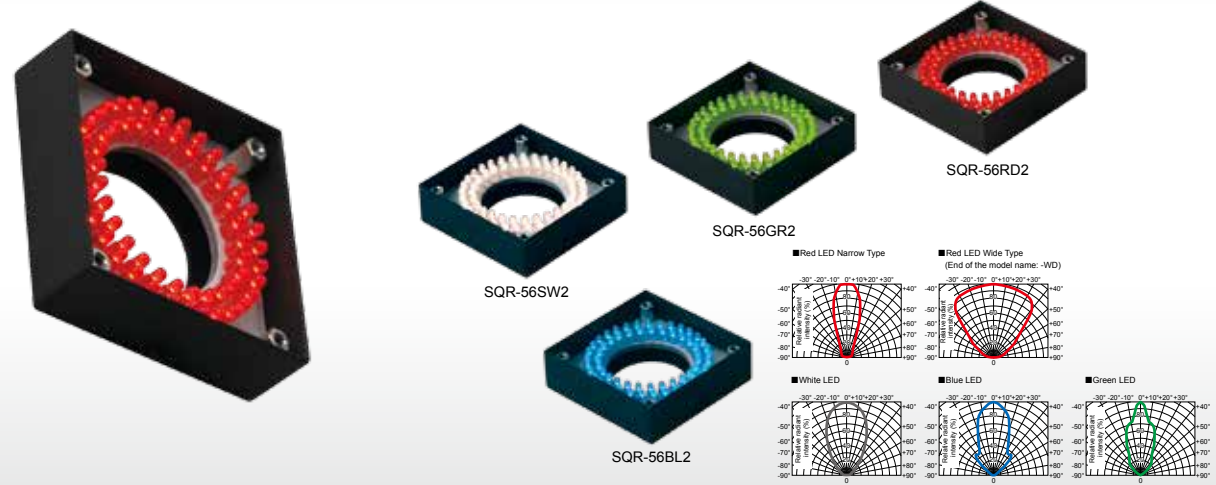
Search



You can also use your smartphone or cell phone.

Use a search engine.

Provides direct light from the upper section

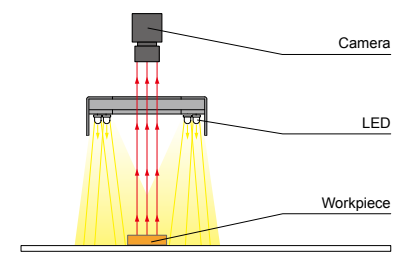


Applications Character recognition, visual inspections, inspections for damage or stains, reading 2-dimensional code, and inspecting parts on boards, etc.

Characteristics

Rings of bullet-shaped LEDs mounted on a square case. LEDs are mounted on a flat circuit board to illuminate direct light on the workpiece from above.

Example configuration (SQR-56)



Imaging example: Imaging of text on a label

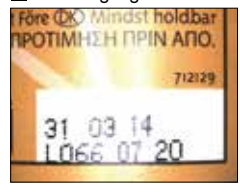


Workpiece: Beverage bottle

We accept custom orders. Please feel free to inquire.

- Change to format
- Increase brightness
- Change to wavelength, etc.

LED Ring Light



Illuminated light converges in the center, making stable inspection difficult.

SQR-56SW2



The whole thing is evenly and brightly illuminated, making it possible to take an image of the label text.

Lineup * End of the model name: -WD: Wide type

Model name	LED color	Power consumption	Peak wavelength/ correlated color temperature	Options	Recommended Control Units	Weight
SQR-56RD2	Red	24 V / 3.1 W	630 nm	Diffusion plate	PD3 CC-ST-1024	75 g
SQR-56RD2-WD				Polarization plate		
SQR-56SW2	White	24 V / 3.8 W	5,500 K	Diffusion plate	PSB PTU2	
SQR-56BL2	Blue		470 nm			
SQR-56GR2	Green		525 nm			

LED Properties: Light Spectrum ▶ P.234

Options ▶ P.215

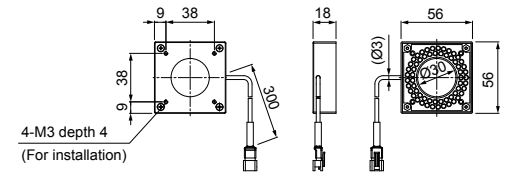
Extension Cables ▶ P.222

Control Unit Selection Guide ▶ P.181

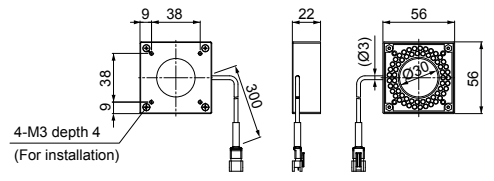
Control Unit Page ▶ P.185

Dimensions (mm)

SQR-56RD2/RD2-WD



SQR-56SW2/BL2/GR2



You can change the connectors of the Light Unit cable. Choose between M12 connectors and flying leads. Refer to P.125 for details.

We have various materials.

- PDF Drawings
- DXF Drawings
- 3D CAD
- Instruction Guides
- Product Filers
- Imaging Samples
- Data Sheets
- Examples of Custom Ordered Products

Download here. <http://www.ccs-grp.com/dl/>

Low-angle Ring Lights

SQR-TP series

Refer to our website for product details.

CCS SQR-TP

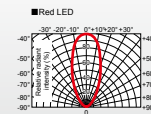
Search



You can also use your smartphone or cell phone.

Use a search engine.

Provides direct light at a low angle from an angled emitting part



Applications Visual inspections for metal parts, inspection for damage/stains for electronic parts, inspection for damage to resin parts, inspection for damage to glass edges, and inspection for damage to stain finishing

Characteristics

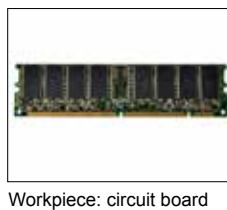
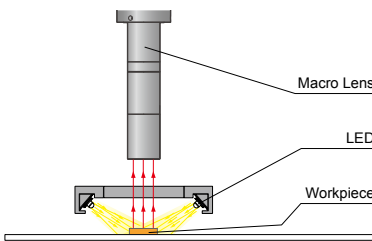
Rings of surface-mounted LEDs mounted on a square case. Provides direct light at a low angle from an angled emitting part.

We accept custom orders. Please feel free to inquire.

- Change to format
- Increase brightness
- Change to wavelength, etc.

Example configuration (SQR-TP-34RD)

Imaging example: Imaging of text on a circuit board



Workpiece: circuit board

Macro lens + LED Spot Light



It is difficult to recognize the surface status using coaxial illumination.

SQR-TP-34RD



Can make an image of the text on the circuit board, the text on the chip, and the soldering plating.

Lineup

Model name	LED color	Power consumption	Peak wavelength	Options	Recommended Control Units		Weight
					PD3	CC-ST-1024	
SQR-TP-28RD	Red	24 V / 0.5 W	638 nm	-	PD3	CC-ST-1024	15 g
SQR-TP-34RD		24 V / 0.9 W		-	PSB	PTU2	16 g

LED Properties: Light Spectrum ▶ P.234

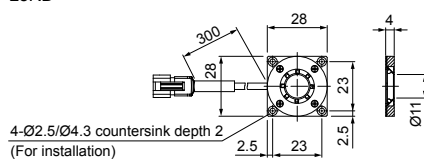
Extension Cables ▶ P.222

Control Unit Selection Guide ▶ P.181

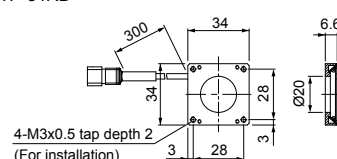
Control Unit Page ▶ P.185

Dimensions (mm)

SQR-TP-28RD



SQR-TP-34RD



You can change the connectors of the Light Unit cable. Choose between M12 connectors and flying leads. Refer to P.125 for details.

You can inquire using our website.

Requests for Light Unit Selection

Requests for Loan Products

Requests for Estimates

Requests for a Catalog

Product Inquiries

Other Inquiries

Inquire on our website here. <http://www.ccs-grp.com/contact/>