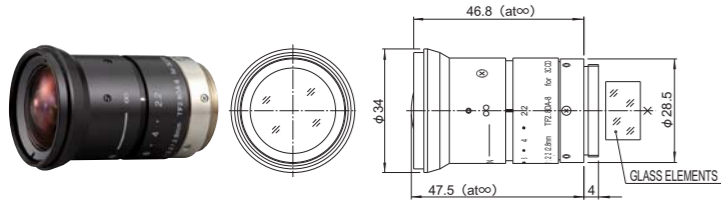


For FA/Machine Vision 3CCD Camera

TF2.8DA-8

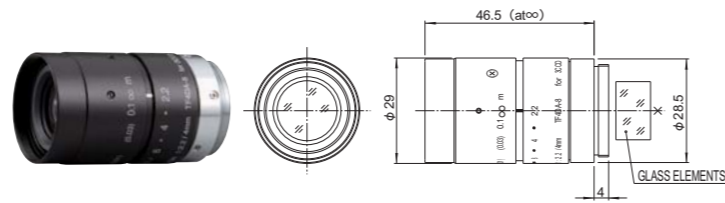
FIXED WIDE 3CCD MANUAL C-mt METAL



Unit : mm

TF4DA-8

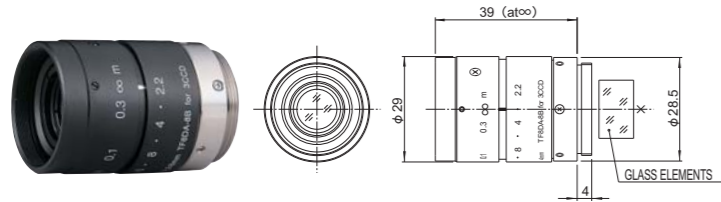
FIXED 3CCD MANUAL C-mt METAL



Unit : mm

TF8DA-8B

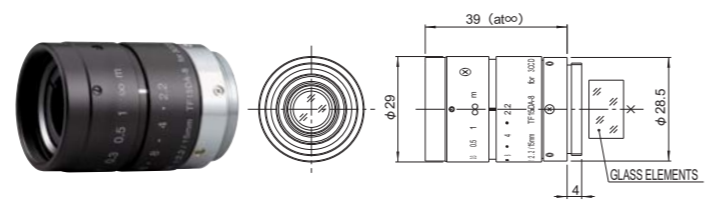
FIXED 3CCD MANUAL C-mt METAL



Unit : mm

TF15DA-8

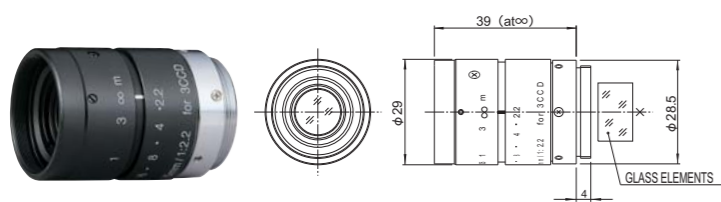
FIXED 3CCD MANUAL C-mt METAL



Unit : mm

TF25DA-8B

FIXED 3CCD MANUAL C-mt METAL



Unit : mm

Feature Indications



Fixed Focal
High performance single focal lens for the best image quality



Wide Angle
Wide angle lens which ensures wide field of view



Manual Iris
Manually-operated iris



... With locking knob for iris and focus



For 3CCD Camera
Lens exclusively for 3CCD cameras for the optimum color reproduction and high resolution of 3CCD cameras



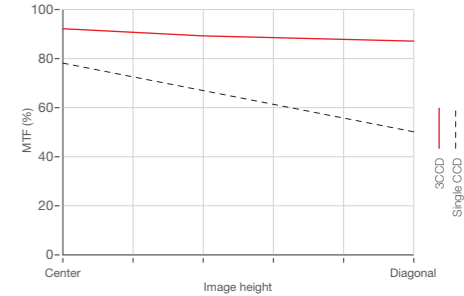
C Mount
Screw-in mounting commonly used in FA lenses



Metal Mount
Metal mounting with high accuracy and durability

3CCD Camera Lens

3CCD cameras have thicker glass between the lens and the CCD than single CCD cameras because they have three CCDs to correspond with the red, blue and green colors separated in the prism. Fujinon 3CCD lenses are designed to optimally match with 3CCD cameras. The chart shown at the right explains the difference in MTF when a 3CCD lens and a single CCD lens is mounted on a 3CCD camera.

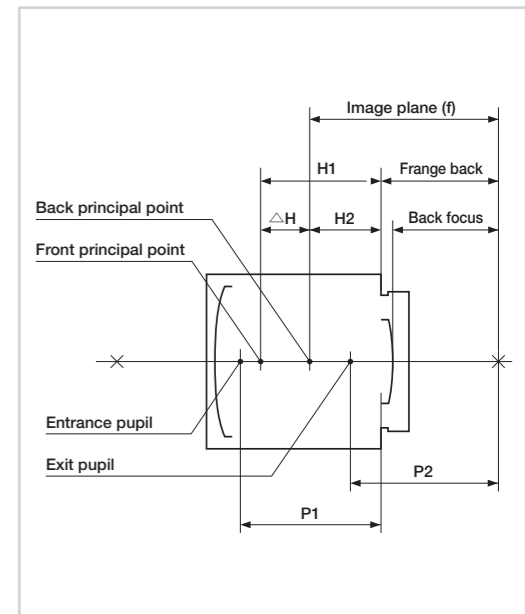


	TF2.8DA-8	TF4DA-8	TF8DA-8B	TF15DA-8	TF25DA-8B	
Focal Length (mm)	2.8	4	8	15	25	
Iris Range	F2.2-F16-Close	F2.2-F16-Close	F2.2-F16-Close	F2.2-F16-Close	F2.2-F16-Close	
Operation	Focus	Manual	Manual	Manual	Manual	
	Iris	Manual	Manual	Manual	Manual	
Angle Of View (HxV)	1/3"	89°08' x 69°20'	61°56' x 48°27'	33°24' x 25°22'	18°11' x 13°41'	10°58' x 8°14'
Focusing Range (From Front Of The Lens) (m)		∞ ~ 0.1	∞ ~ 0.1	∞ ~ 0.1	∞ ~ 0.2	
Object Dimensions at M.O.D. (HxV) (mm)	1/3"	218 x 153	131 x 98	66 x 50	36 x 27	42 x 32
Back Focal Distance (in air) (mm)	14.49	14.61	14.83	16.32	15.12	
Exit Pupil Position (From Image Plane) (mm)	98	88	-176	-89	-120	
Filter Thread (mm)	-	M27 x 0.5	M25.5 x 0.5	M25.5 x 0.5	M25.5 x 0.5	
Mount	C	C	C	C	C	
Mass (g)	75	70	60	60	60	
Remarks	With Metal Mount	With Metal Mount	With Metal Mount	With Metal Mount	With Metal Mount	

OPTICAL DATA (FA/Machine Vision LENS)

Sensor size	Product name	Focal Length	Aperture/Full open	Front principal point H1 (from Mount)	Back principal point H2 (from Mount)	Distance between the principal points ΔH
1/2"	DF6HA-1B	6.15	1.2	-16.45	11.38	27.82
	HF9HA-1B	9.23	1.4	-12.91	8.30	21.21
	HF12.5HA-1B	12.88	1.4	-2.85	4.64	7.49
	HF16HA-1B	16.49	1.4	3.05	1.03	-2.02
	HF25HA-1B	25.81	1.4	1.82	-8.28	-10.10
	HF35HA-1B	34.99	1.6	-9.00	-17.47	-8.46
2/3"	HF50HA-1B	49.57	2.3	-42.64	-32.04	10.59
	HF75HA-1B	75.01	2.8	-100.77	-57.48	43.29
	HF12.5SA-1	12.83	1.4	-33.68	4.70	38.37
	HF16SA-1	16.33	1.4	-24.15	1.20	25.35
	HF25SA-1	24.00	1.4	-23.47	-6.47	17.00
	HF35SA-1	35.74	1.4	-1.27	-18.21	-16.94
	HF50SA-1	51.72	1.8	-1.87	-34.19	-32.32
	HF75SA-1	74.97	1.8	-34.56	-57.45	-22.89
	HF35SR4A-SA1L	35.00	2.0	-19.33	-17.47	1.85
	HF50SR4A-SA1L	50.00	2.8	18.09	-32.47	-50.56
	1"	CF12.5HA-1	12.83	1.4	-33.68	4.70
CF16HA-1		16.33	1.4	-24.15	1.20	25.35
CF25HA-1		24.00	1.4	-23.47	-6.47	17.00
CF35HA-1		35.74	1.4	-1.27	-18.21	-16.94
CF50HA-1		51.72	1.8	-1.87	-34.19	-32.32
CF75HA-1		74.97	1.8	-34.56	-57.45	-22.89
1/3" (3CCD)	TF2.8DA-8	2.86	2.2	-33.74	14.67	48.41
	TF4DA-8	4.15	2.2	-28.46	13.37	41.83
	TF8DA-8B	8.23	2.2	-10.81	9.30	20.10
	TF15DA-8	15.26	2.2	-0.33	2.27	2.60
	TF25DA-8B	24.94	2.2	14.49	-7.42	-21.91
Fish-Eye	FE185C046HA-1	1.43	1.4	-38.26	16.10	54.36
	FE185C057HA-1	1.78	1.4	-37.55	15.75	53.30
	FE185C086HA-1	2.68	1.8	-35.00	14.85	49.85

Entrance pupil position P1 (from Mount)	Exit pupil position P2 (from Image plane)	Back focal distance (in air)	Distortion	Relative illumination (Aperture: at full open. Image height: at diagonal)
-21.8	-46	11.44	-1.93%	39
-19.1	-28	13.48	-2.09%	32
-10.3	-31	15.09	-2.01%	35
-4.5	-30	15.15	-0.96%	35
-3.0	-32	14.58	-0.27%	46
2.1	-27	15.00	0.03%	56
5.8	-25	15.25	0.04%	61
35.4	-27	15.75	0.27%	63
-44.9	-101	16.07	-0.30%	68
-38.9	-172	17.99	-0.08%	78
-43.3	-139	22.32	-0.18%	72
-2.1	-37	14.99	-0.07%	62
0.5	-49	17.81	-0.03%	75
-2.2	-52	24.43	-0.03%	72
-37.8	-74	19.65	-0.02%	74
-26.7	-484	19.16	0.07%	80
-44.9	-101	16.07	0.17%	40
-38.9	-172	17.99	0.31%	34
-43.3	-139	22.32	0.02%	39
-2.1	-37	14.99	-0.15%	43
0.5	-49	17.81	-0.06%	62
-2.2	-52	24.43	-0.06%	67
-36.7	101	14.51	-6.25%	51
-32.8	88	14.61	-3.78%	53
-18.6	-178	14.83	-1.32%	30
-12.9	-89	16.32	-0.33%	34
-5.1	-120	15.12	-0.12%	30
-39.7	-227	9.70	-0.47% ※	75
-39.3	-66	9.70	-0.80% ※	74
-37.5	-41	9.75	-0.53% ※	84



※ $y=f\theta$