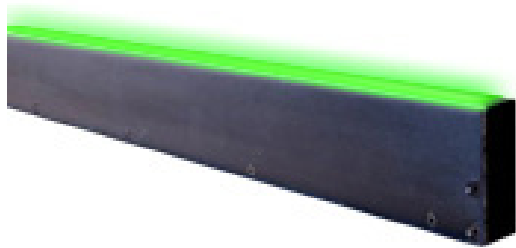


LL

MetaLight™ Line Light Model:LL804



Vision Light Tech
creating optical solutions



Metaphase offers the industry's breakthrough performance line lights for imaging, web, and high-speed line scan applications requiring ultra-high intensity and uniformity. Our line lights are built as lean fixtures that can be easily controlled and integrated into visions systems.

Our MetaLight™ Line Lights feature an adjustable lens, enhanced cooling options, and low current consumption.

BENEFITS:

- High Uniformity both laterally and longitudinally
- Lens Options for various beam widths and working distances
- Strobe synchronization; Control compatibility for high precision pulse-modulation and 0-10V Intensity Control capability
- Adjustable lens focusing range of mm to meters
- Backlight versions for web backlight & silhouetting applications
- From 1" to 120" (10ft) in length
- Built-in constant current driver(s) provides consistent illumination output
- 24V version require no special controllers; simply provide 24VDC

APPLICATIONS:

- Road Surface Inspection
- Bottle Inspection
- High Speed Scanning
- Geometry Measurement
- Detection of Holes
- Sheet Inspection
- Web Inspection
- Print Inspection
- Fabrics Inspection
- Solar Cells

RATINGS:



Buy American

DOMINANT WAVELENGTH:

| Part # | Color | Power Supply |
|--------------|-----------------------------|--|
| LL804-W-24 | White 5500K | |
| LL804-R-24 | Red 630nm | |
| LL804-B-24 | Blue 470nm (Optional 455nm) | |
| LL804-G-24 | Green 530nm | 24 volt power supply available upon request. |
| LL804-IRN-24 | Infrared 850nm | |

10 ft. flying leads come standard on all products.
Light features built-in constant current driver.
No expensive controller required.

Vision Light Tech B.V.

Protonenlaan 22, 5405 NE UDEN, P.O. Box 345, 5400 AH UDEN, The Netherlands

Phone: +31 (0)413 26 00 67, Fax +31 (0)413 26 09 38, E-mail: inquiry@vlt.nl, Website: www.vlt.nl

Trade register No. 17150044, VAT No. NL8112.30.946.B01



MetaLight™ Line Light

Model:LL804



Vision Light Tech
creating optical solutions

ELECTRICAL & CONTROLS:

| | |
|-----------------------|-------------------------------|
| Current Consumption | 1.75A |
| Light Intensity | +/-5% |
| Illuminance | 220,000 Lux |
| Operating Temperature | -40°F(-45°) to 100°F (37.8°C) |
| Lifetime Hours | 75,000 Hours |

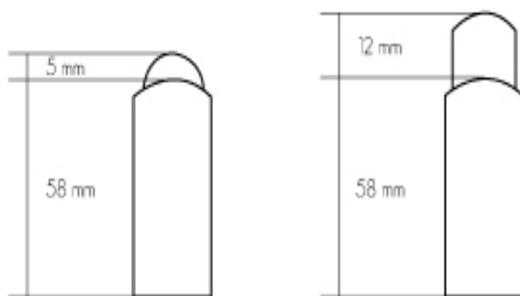
WIRING DIAGRAM:

| | |
|---------------|---------------------------|
| WHITE & RED | +24VDC |
| GREEN | Signal Ground |
| BLACK & GREEN | Ground |
| WHITE | 0-10VDC Intensity Control |

18 AWG 4 WIRES CABLE X 1 w/ 24 AWG 2 WIRES CABLE X 1
When not using intensity control, connect 0-10V control line to +24 (Max Intensity Control = 25V) and intensity control ground to ground

FOCAL LENS:

MetaLight Line Light Lens Options

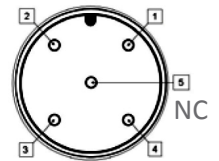


HOUSING:

| | |
|------------|--|
| Dimensions | Length: 36.27in / 921.3mm Width: 1in / 25.4mm Height: 2.95in / 74.88mm |
| Weight | 3lb/ 1360.78g |
| Housing | Aluminum |
| Finish | Powder Coating - Black |

WIRING DIAGRAM:

| PIN # | Function |
|-------|---------------------------|
| 1 | +24VDC |
| 2 | 0-10VDC Intensity Control |
| 3 | Ground |
| 4 | Signal Ground |



Vision Light Tech B.V.

Protonenlaan 22, 5405 NE UDEN, P.O. Box 345, 5400 AH UDEN, The Netherlands

Phone: +31 (0)413 26 00 67, Fax +31 (0)413 26 09 38, E-mail: inquiry@vlt.nl, Website: www.vlt.nl

Trade register No. 17150044, VAT No. NL8112.30.946.B01

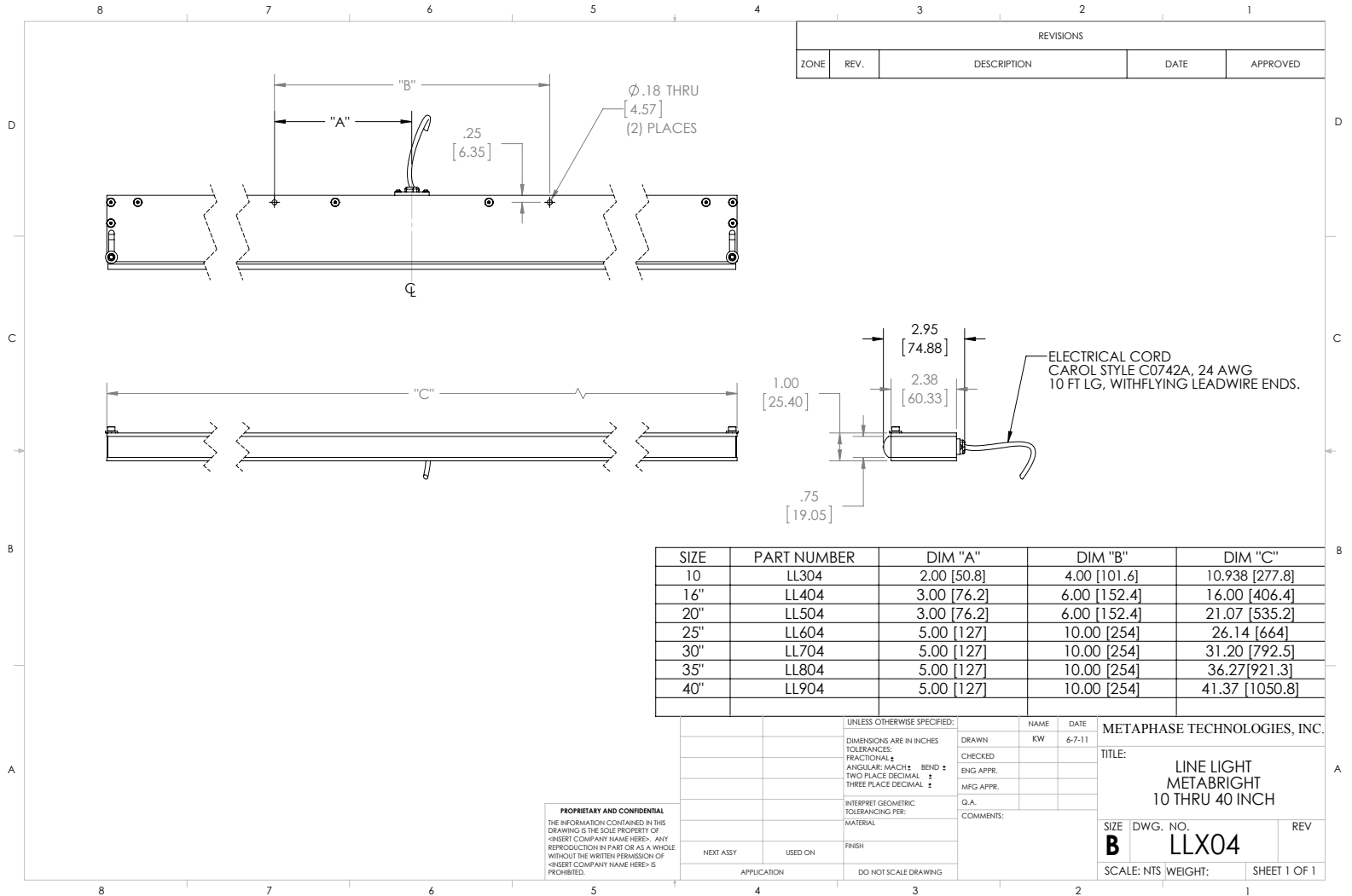


MetaLight™ Line Light Model:LL804



Vision Light Tech
creating optical solutions

DRAWING & DETAILS:



ORDERING INFORMATION:

• LL804 - - 24 -

Back Line Light Option:
Replace designator "LL" with "BLL" on the prefix for units deployed in transmitted imaging applications.
ex: BLL804-R-24

W- White 6000k
R- Red 630nm
G- Green 530nm
B- Blue 470 nm (Optional 450nm)
IRN- Infrared 850nm

***BLANK**- 10 ft. Flying Leads
T- M12 Quick Disconnect
ILD- In Line Dimmer
ILS- In Line Strobe (customer provide trigger info)
LL - Long Focal Lens

* Intensity will be lower for NON-Fan option

Vision Light Tech B.V.

Protonenlaan 22, 5405 NE UDEN, P.O. Box 345, 5400 AH UDEN, The Netherlands

Phone: +31 (0)413 26 00 67, Fax +31 (0)413 26 09 38, E-mail: inquiry@vlt.nl, Website: www.vlt.nl

Trade register No. 17150044, VAT No. NL8112.30.946.B01