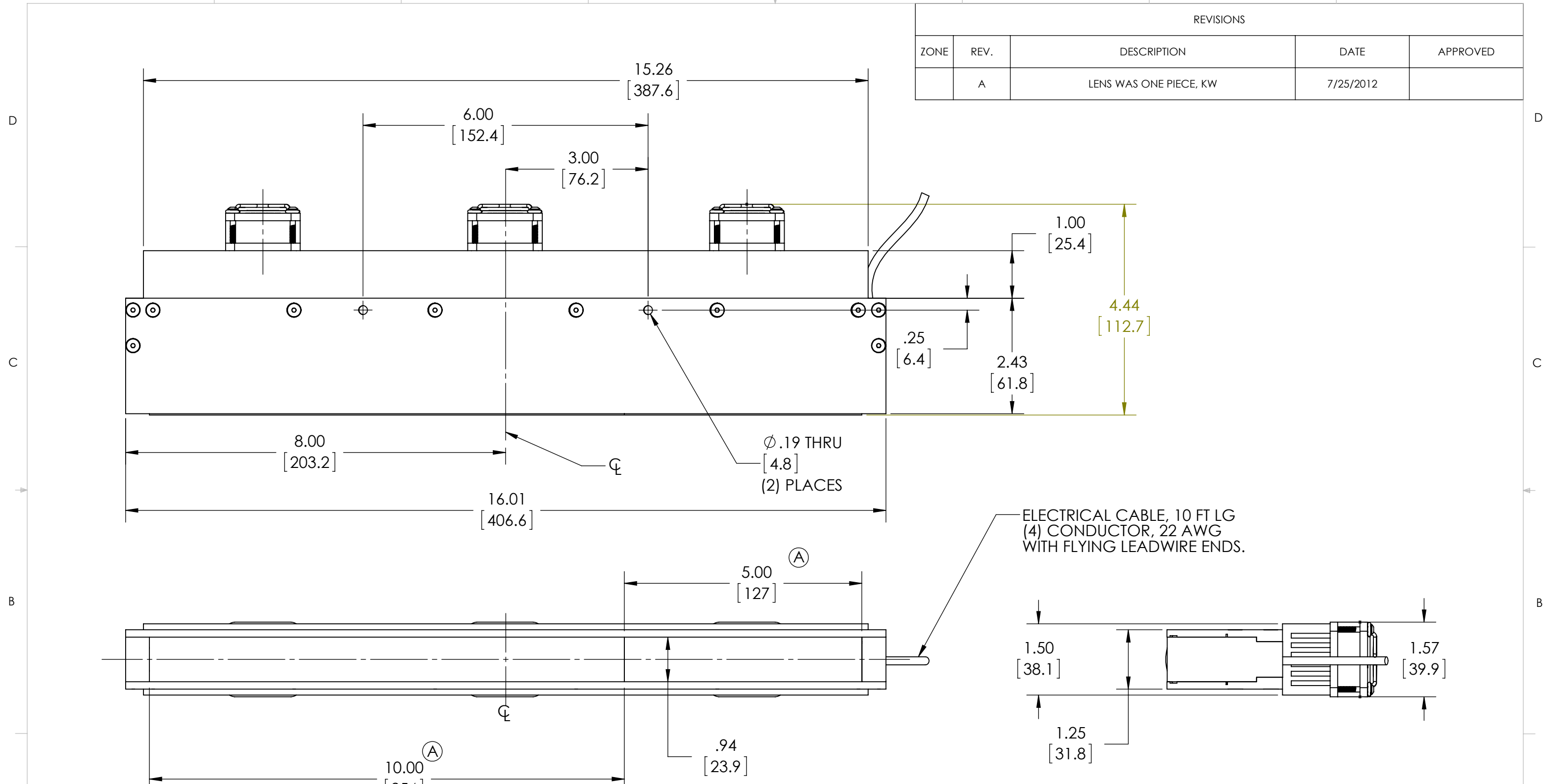


8 7 6 5 4 3 2 1

REVISIONS				
ZONE	REV.	DESCRIPTION	DATE	APPROVED
	A	LENS WAS ONE PIECE, KW	7/25/2012	



ELECTRICAL CABLE, 10 FT LG
(4) CONDUCTOR, 22 AWG
WITH FLYING LEADWIRE ENDS.

Metaphase Technology
CONFIDENTIAL

PROPRIETARY AND CONFIDENTIAL
THE INFORMATION CONTAINED IN THIS DRAWING IS THE SOLE PROPERTY OF <INSERT COMPANY NAME HERE>. ANY REPRODUCTION IN PART OR AS A WHOLE WITHOUT THE WRITTEN PERMISSION OF <INSERT COMPANY NAME HERE> IS PROHIBITED.

UNLESS OTHERWISE SPECIFIED:		NAME	DATE	METAPHASE TECHNOLOGIES, INC.	
DIMENSIONS ARE IN INCHES		DRAWN	KW	7/24/2012	TITLE: MB-CLL406_15" COLLIMATING
TOLERANCES:		CHECKED			
FRACTIONAL ± 1/64		ENG APPR.			
ANGULAR: MACH ± 1/2° BEND ± 2°		MFG APPR.			
TWO PLACE DECIMAL ± .01		Q.A.			SIZE
THREE PLACE DECIMAL ± .005		COMMENTS:			DWG. NO.
INTERPRET GEOMETRIC TOLERANCING PER:					REV
MATERIAL					B
FINISH					CLL406
NEXT ASSY	USED ON				A
APPLICATION	DO NOT SCALE DRAWING				SCALE: NTS
					WEIGHT:
					SHEET 1 OF 1

8 7 6 5 4 3 2 1